

# Symphony No. 3 in E $\flat$ Major

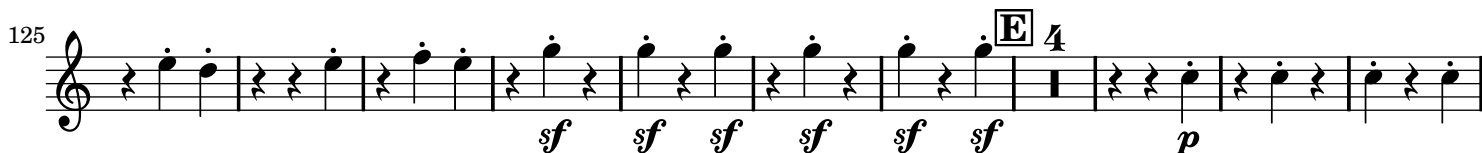
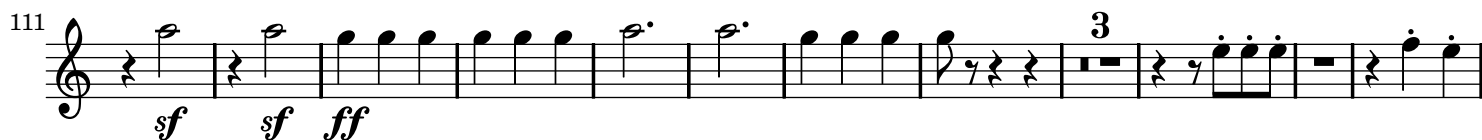
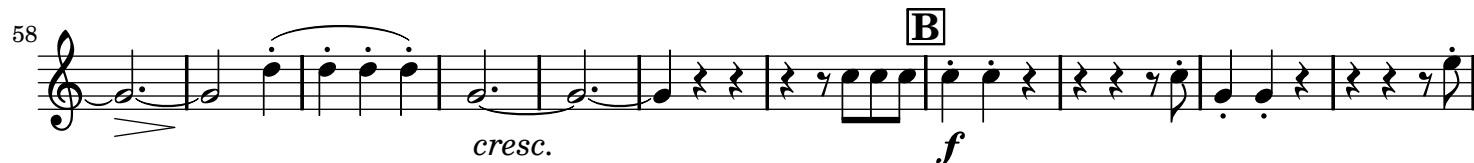
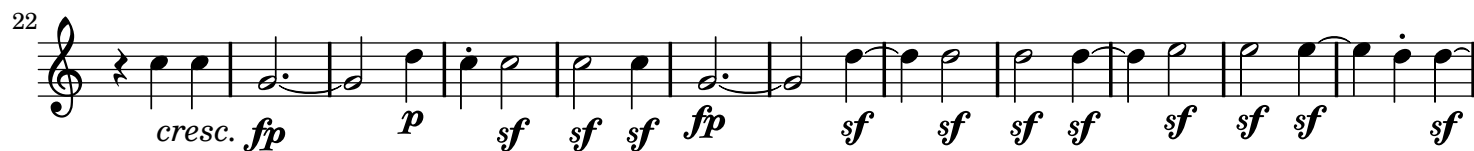
Eroica

Horn I

Ludwig van Beethoven (1770-1827)

Op. 55

Allegro con brio ( $\text{♩} = 60$ )



152 **1.** **2.** **2** **12** *sfp* *p*

178 **7** **F** *pp* *ff*

196 **4** **4** *ff* *p* *cresc.*

214 **5** **G** *f* *ff* *p*

232 **11** **H** *sf* *ff*

254 **6** *sf sf sf sf sf sf sf sf sf sf sf sf sf sf sf sf*

272 **I** **24** *sf sf*

308 **3** *f sf sf sf sf sf sf sf sf sf sf*

322 **K** **20** *ff* *p*

353 *cresc.* *sempre cresc.* *sf*

366 **L** **31** **M** **10** *ff* *dolce* *in F*

417 **31** **N** **20** **O** **18** **P** **20** *p* *pp* *cresc.* *cresc.* *in E $\flat$*

515 **Q**  
*f sf sf sf sf sf ff sf sf sf*

526 **2**  
*ff sf sf sf sf*

538 **R**  
*sf sf p sfp sfp cresc. 2*

550 **S**  
*ff f f f p f*

563 **2 5 13**  
*ff p pp cresc. p*

594 **T**  
*9 pp pp*

616 **3**  
*decresc. p*

630 **U**  
*cresc.*

641 **V**  
*cresc.*

653 **f**

663 **sf sf sf**

673 **W**  
*ff p < > f 3*

686

*f f f f ff*

## Marcia funebre

Adagio assai (♩ = 80)

*p p cresc.*

17

*p pp sf*

31

*p fp p*

51

*p cresc. f sf p f sf*

62

*p f p*

Maggiore

71

*p ff sf sf sf sf*

80

*p cresc. p*

89

*p cresc. f sempre più f*

97

*ff sf sf sf sf f*

Minore

127

*sf ff ff*

141 *sf* *sf*

150 **E** 8 *ff* *sf* *sf*

166 4 **F** *ff* *p*

176 *cresc.* *p* *p*

190 2 **G** *sf* > *p*

198 3 *f* *p* *f* *sf* > *p*

208 **H** 13 *cresc.* *f* *pp* *cresc.* *p cresc.*

229 11 *p* *pp* *sf* > *p*

## Scherzo

Allegro vivace (♩. = 116)

30 52 7 **A** *p* *ff*

96

109 3 *p*

122 **B** 7 *f sf sf sf p*

139 7 *p p*

155 1 *ff f f*

165 2 *f f f f f* **Trio**

176 2 *cresc. sf f sf*

188 2 *cresc. sf f*

200 25 *sf*

236 2 3 *cresc. sf sf*

252 3 1 2 84 *sf*

350 7 **C** *ff*

366

379 3 *p*

391 **Alla breve** (♩ = 116)

407

424 **Coda** 8

442

*p* *p* *p* *cresc.* *ff* *f* *f* *p cresc.* *cresc.* *f* *ff* *ff* *ff*

## Finale

**Allegro molto** (♩ = 76)

6 *ff* *sf* *sf* *sf* 17 *ff* *p* 5 *ff*

38 *p* 5 6 2 3 3 7 3

73 *p* *cresc.* *decresc.* *f*

87 *sf* *f* *p*

98 *f* *f*

109 **A** 7 *ff* 39 *sf* 2 13 **B** 36 **C** 43

256 **D** 16 *p* in F 41 **E** 27 in E $\flat$  *sf* *sf*

**Poco Andante** (♩ = 108)

350 **6** *p* *sf* *cresc. sf* *p*

366 *p* *cresc.* *p* *cresc.* *p*

377 *cresc.* *p* *ff* *sf* *sf* *sf* *sf* *sf*

387 *sf* *sf*

396 **G** *sf* *sf* *p* *cresc.* *p* *cresc.* *p*

407 *cresc.* *f* *ff* **2** **12**

433 **Presto** (♩ = 116) **2** *ff* *sf* *sf* *sf* *sf* *sf* *sf* *sf*

444 *sf* *sf* *sf* *sf* *sf* *sf* *sf* *sf* *sf*

455 *sf* *sf* *sf* *sf* *sf* *sf* *sempre più f* *ff*

465